



SPACE 8

RIVIERA

RÊVE

Apartments

Azizi Riviera Rêve



Azizi presents another masterpiece addition to its bundle of exceptional properties in Dubai. Azizi Riviera Reve is one of the most luxurious addresses in Dubai! Here you will be able to wake up to breathtaking views of the lagoon, which are no less than a visual treat for the eyes. Azizi presents residents with a collection of floor plans to choose from, including studios, one and two-bedroom apartments that are very spacious and inviting. Surround yourself with style, service and a new level of sophistication at Riviera Reve. With its effortless blend of space and functionality, Riviera Reve is a classic in its own right.

Created with contemporary lifestyles in mind, Riviera Réve offers intuitiveness and sophistication in every way. With premium wood joinery and finishings, bespoke integrated lighting and Italian marble flooring, every detail of your home has been curated to perfection.

STEP INTO UNRIVALLED LUXURY



Spend your days wandering along the French-Riviera-inspired boulevard as you shop, dine and mingle with other residents. From luxury fashion boutiques to homewares stores, fine dining restaurants to quaint cafes and year-round entertainment for the whole family, you might just never want to leave.

THE WORLD AT YOUR DOORSTEP



A neutral, earthy colour palette evokes a sense of down-to-earth sophistication and ease – purposefully designed to connect you to nature, every day. With palm trees, local fauna and fresh flowers welcoming you home, this lobby is a breath of fresh air.

A SANCTUARY OF SECLUSION

AZIZI



Welcome to Azizi Riviera - one of Dubai's most luxurious destinations. Where you can wake up to breathtaking crystal lagoon views, spend your days wandering along the French-Riviera-inspired boulevard and mingle with like-minded residents - those that appreciate the finer things in life. Featuring three residential towers, a 5-star hotel and an executive business centre, this destination truly offers it all.

REVEL ALONG THE RIVIERA



Step into the main lobby and experience a first impression like no other. With floor-to-ceiling glass windows, Italian marbled flooring and an incredible chandelier towering from the ceiling - modern-day elegance has never been so memorable.

AN ELEVATED ENTRANCE



With the unexpected luxury of space, relish in the elegance of your master bedroom. Designed using an open, expansive plan surrounded by floor-to-ceiling glass, each master bedroom allows the morning light to flood in while offering panoramic views of the magnificent crystal lagoon.

SPACIOUS SPLENDOUR



Bask in the glory of your very own private terrace overlooking magical views. Offering maximum seclusion in a tranquil setting, our lagoon-facing residences provide endless views across Dubai's iconic skyline. Dine, entertain or simply relax on your exclusive balcony and live the 'high-life' every day.

VIEWS, PRIVY TO FEW



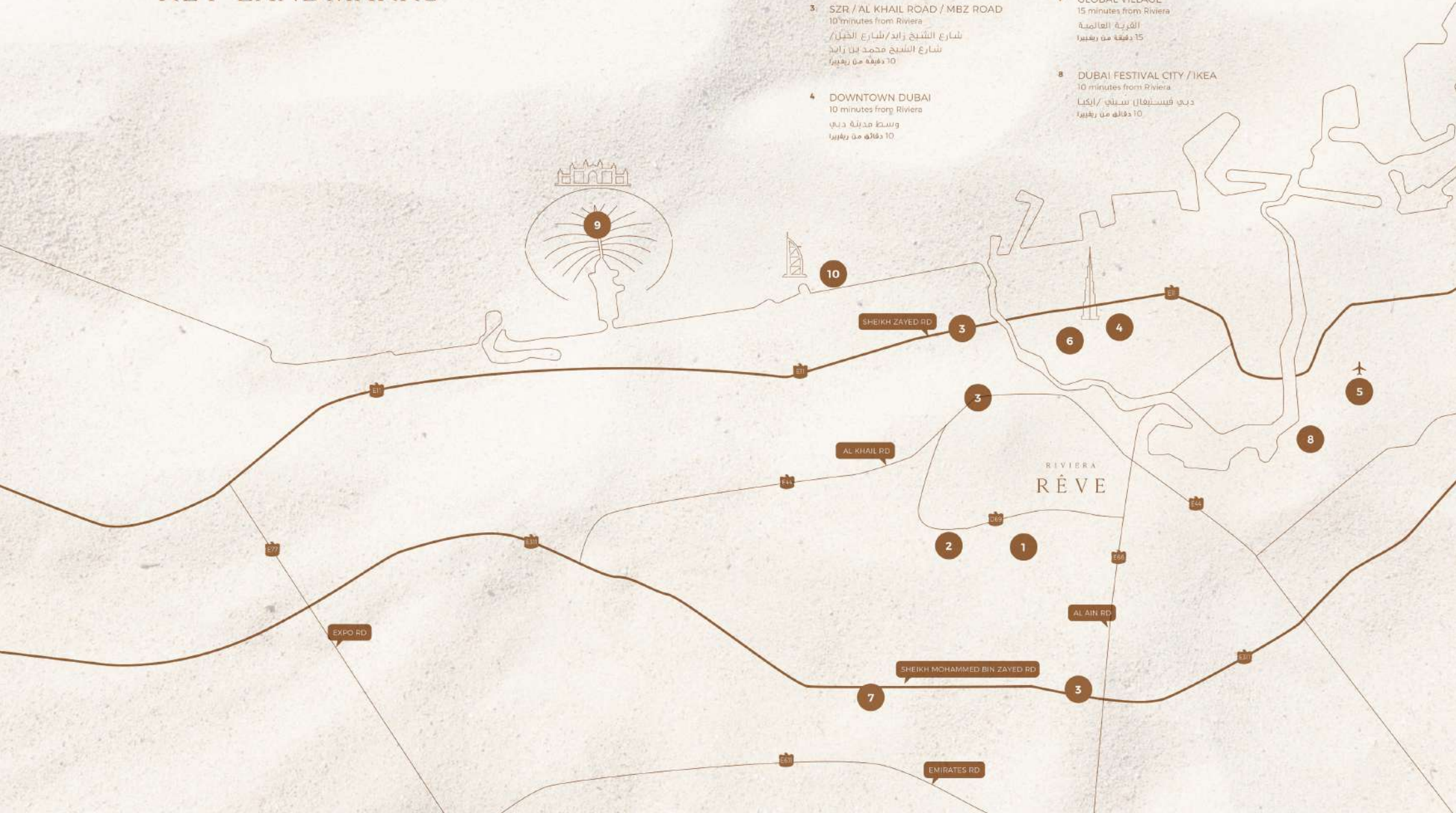
Brimming with boutique shops, fine dining restaurants, quaint cafes, recreational facilities and everyday amenities, the French-Riviera-inspired boulevard is a one-of-a-kind experience in the heart of Dubai. Enjoy a vibrant, dynamic lifestyle, just moments from your door.

A VIBRANT BOULEVARD



KEY LANDMARKS

- 1 MEYDAN ONE MALL / MEYDAN ONE TOWER
3 minutes from Riviera
ميدان ون / برج ميدان ون
3 دقائق من ريفيرا
- 2 THE MEYDAN HOTEL
2 minutes from Riviera
فندق الميدان
2 دقائق من ريفيرا
- 3 SZR / AL KHAIL ROAD / MBZ ROAD
10 minutes from Riviera
شارع الشيخ زايد / شارع الخليل /
شارع محمد بن زايد
10 دقيقة من ريفيرا
- 4 DOWNTOWN DUBAI
10 minutes from Riviera
وسط مدينة دبي
10 دقائق من ريفيرا
- 5 DUBAI INTERNATIONAL AIRPORT
15 minutes from Riviera
مطار دبي الدولي
15 دقيقة من ريفيرا
- 6 DIFC / BUSINESS BAY
10 minutes from Riviera
مركز دبي المالي العالمي - الخليج التجاري
10 دقائق من ريفيرا
- 7 GLOBAL VILLAGE
15 minutes from Riviera
القرية العالمية
15 دقيقة من ريفيرا
- 8 DUBAI FESTIVAL CITY / IKEA
10 minutes from Riviera
دبي فيستيفال سيتي / إيكيا
10 دقائق من ريفيرا
- 9 PALM JUMEIRAH
22 minutes from Riviera
نخلة جميرا
22 دقائق من ريفيرا
- 10 JUMEIRAH BEACH
12 minutes from Riviera
شاطئ جميرا
12 دقائق من ريفيرا



FLOOR PLAN

3 BEDROOM TYPE 1

19TH TO 26TH FLOOR



SUITE AREA : 1455.39 SQ.FT
TOTAL AREA : 1777.70 SQ.FT

TYPICAL UNITS

FLOOR PLAN

3 BEDROOM TYPE 2

19TH TO 26TH FLOOR



SUITE AREA : 1383.27 SQ.FT
TOTAL AREA : 1691.76 SQ.FT

TYPICAL UNITS

FLOOR PLAN

2 BEDROOM TYPE 1

1ST TO 18TH FLOOR



SUITE AREA : 1058.84 SQ.FT
TOTAL AREA : 1226.65 SQ.FT

TYPICAL UNITS

FLOOR PLAN

2 BEDROOM TYPE 2

2ND TO 18TH FLOOR



SUITE AREA : 1018.37 SQ.FT
TOTAL AREA : 1243.88 SQ.FT

TYPICAL UNITS

FLOOR PLAN

STUDIO TYPE 1

1ST TO 18TH FLOOR



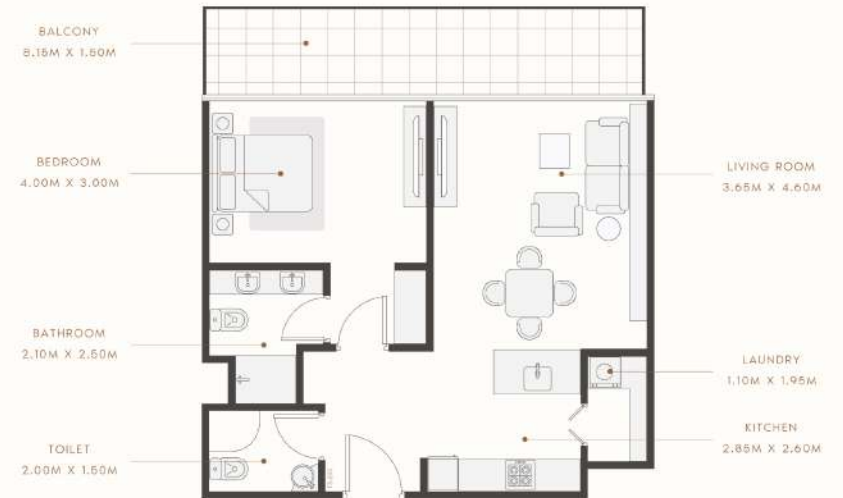
SUITE AREA : 364.36 SQ.FT
TOTAL AREA : 444.55 SQ.FT

TYPICAL UNITS

FLOOR PLAN

1 BEDROOM TYPE 1

1ST TO 26TH FLOOR



SUITE AREA : 647.77 SQ.FT
TOTAL AREA : 793.19 SQ.FT

TYPICAL UNITS



Highlights of Azizi Riviera Reve

- Studio, 1, 2 & 3BR apartments
- French-Riviera-inspired boulevard
- Developed by leading Azizi development
- Close to key landmarks of Dubai
- Located in Meydan, Mohammed Bin Rashid City
- Hospitality experience
- A premium-designed amenities





Information

Azizi Riviera Rêve

Developer

Azizi

Deadline

Q3 2024



Aleksandr Kovalev
Managing partner

+ 971 54 280 08 88



mail@space8.ae



+ 971 54 280 08 88