



SPACE 8

CHIC

TOWER

de GRISOGONO

GENEVE



Information

Chic Tower

Developer	Damac
Deadline	Q2 2026



SPACE 8

+ 971 54 280 08 88

mail@space8.ae

Apartments

Chic Tower



Chic Tower is a joint project of DAMAC Properties and a jewelry brand de GRISOGONO. Located next to the Dubai Canal, this luxurious tower offers designer studios and 1-4 bedroom apartments with spacious terraces.



REAL ESTATE VALUE

At Chic Tower, one-bedroom flats start at a price of \$400,000.

The fourth joint venture between DAMAC Properties and de GRISOGONO will be Chic Tower.

The Safa One and Safa Two luxury apartment complexes were previously introduced by Dubai's top property developer in association with a well-known jewelry brand. These projects were a great success, and they were followed by the development of a small number of designer villas called Gems Estates.





CHIC TOWER BY DAMAC PROPERTIES AND JEWELRY BRAND DE GRISOGONO

DAMAC Properties will construct Chic Tower, a brand-new luxury residential tower with distinctive architecture, on the Dubai Canal shoreline in Business Bay.

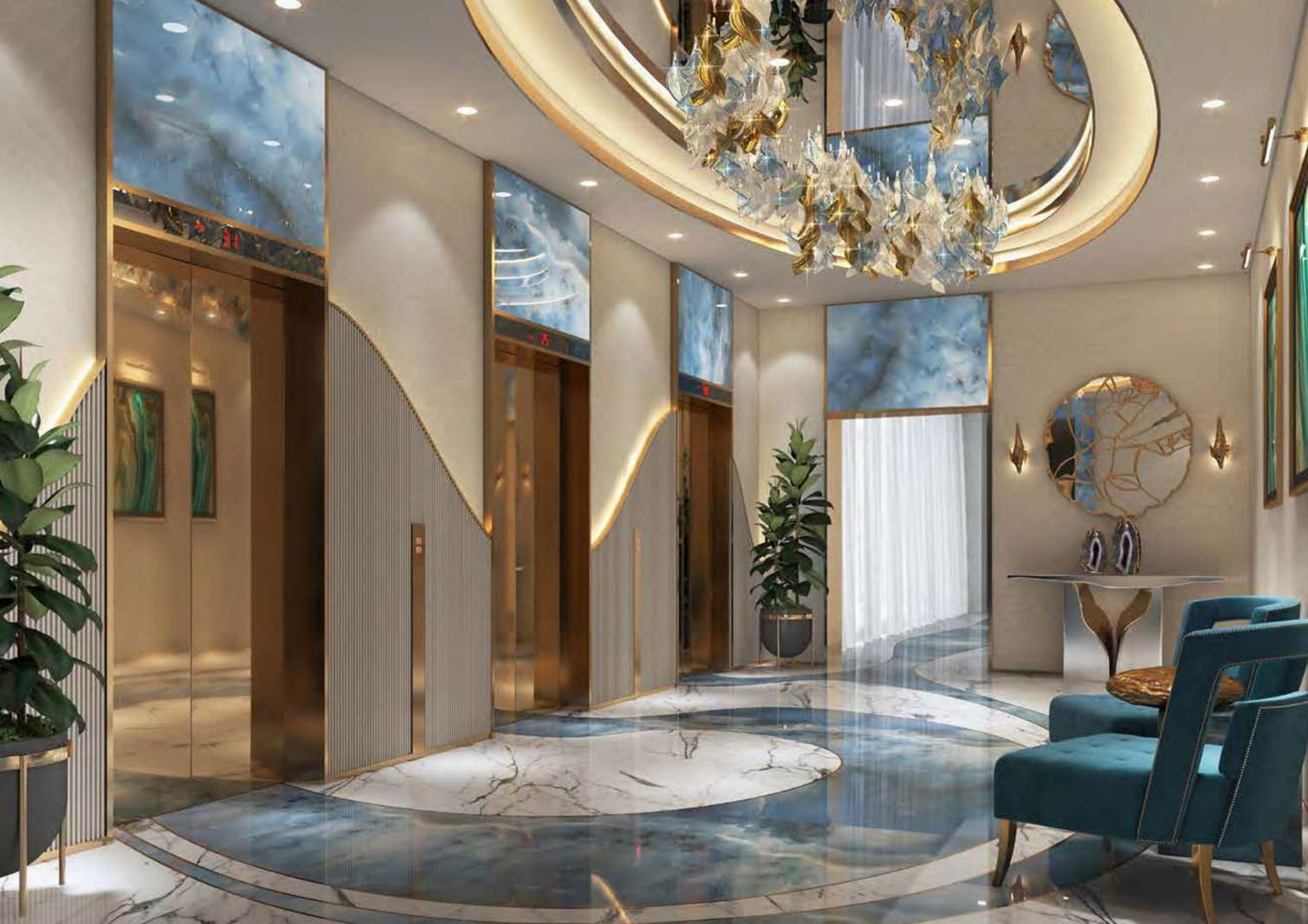
The wellness idea will be the project's distinguishing feature, together with the building's distinctive undulating curves and the design of the jewelry line de GRISOGONO. Future residents will discover here privileged conditions for retaining health, youth, and beauty.

The 42-story Chic Tower has a basement, a platform, and five levels. There will be opulent studios and apartments with 1-2 bedrooms and patios that range in size from 38 square meters to 156 square meters. A small number of extremely luxurious apartments with 3 and 4 bedrooms will also be situated on the upper 34–41 levels.



Exclusive features offered to potential inhabitants of these luxury houses include an infinity pool, a private gym, and a projection screen to view your preferred movies and sports.

The elegant interiors of the apartments and public areas are inspired by the glory of water and the magnificent beauty of turquoise: the design will be predominately composed of delicate shades of blue and green, softened with golden and transparent elements.













The tower's base is bordered by the Dubai Canal, which will be reflected in its distinctively curving terraces. Residents of the property will delight in stunning views of both the fabled Burj Khalifa skyscraper and this picturesque river. The building's terraced roof will mimic a snow-white rock with a waterfall cascade, where water flows from one pool to another.

The idea mixes luxury and health infrastructure and was motivated by the hypnotic beauty and therapeutic qualities of turquoise. Kettlebells and benches for strength training will be set up in the building's foyer. The platform of the tower will house the complex's primary spa and an outdoor fitness area.

Chic Tower residents will enjoy the following premium wellness amenities:

- seven revitalizing baths including hot, cold, salt and mud baths to detoxify the body and rejuvenate the skin;
- the first beauty bar in Dubai, where cosmetologists will create an individual cream for each client, based on the characteristics of his skin;
- lazy river 180 m long;
- several pools, including a spacious infinity pool measuring 50 × 8 m;
- spas;
- GYM's;
- a bar with freshly squeezed juices;
- gazebos;
- playgrounds;
- outdoor party areas;
- football arena.



LOCATION AND TRANSPORT ACCESSIBILITY

Chic Tower will be situated in Business Bay, one of Dubai's most renowned and developed neighborhoods, just a short distance from the charming canal. First-rate dining establishments, spas, and five-star hotels like JW Marriott Marquis and The Oberoi will surround the property.

Excellent public transportation accessibility is provided by the development; occupants of Chic Tower may walk to the Business Bay metro station in under 15 minutes and there are multiple bus stops nearby. Families with children will value the vast selection of educational institutions in the area in terms of social infrastructure.



Therefore, it is only a 5-minute walk to Maple Bear Pre School kindergarten, and it is within a 5- to 10-minute drive to Learning Tree Nursery, Blossom Business Bay Nursery, Kids First Group, Blossom Downtown Nursery Dubai, and Canadian Kids Nursery.

The distance between Old Safa British School, Al Raya Girl's School, Lycée français Jean Mermoz, Abu Hanifa School for Basic Education for Boys, and Horizon English School Dubai is the same.

Residents of Chic Tower will have access to medical treatment at the 10 minute-by-car distance Emirates Hospital Clinics - Business Bay, Medicare, Jaiswal Hospital, Valiant Clinic & Hospital, and Amana Healthcare.



Residents will have easy access to famous locations, popular entertainment, and airports of the emirate thanks to Chic Tower's location in the center of Dubai:

- 5 minutes - Burj Khalifa, The Dubai Mall, Dubai Opera, The Dubai Fountain and other attractions of the Downtown Dubai area, La Perle by Dragone water theater;
- 10 minutes – Museum of The Future, Jumeirah Beach;
- 15 minutes - Dubai International Airport (DXB), Burj Al Arab, Palm Jumeirah, Kite Beach;
- 40 minutes – Al Maktoum International Airport (DWC).





ECONOMIC ATTRACTIVENESS

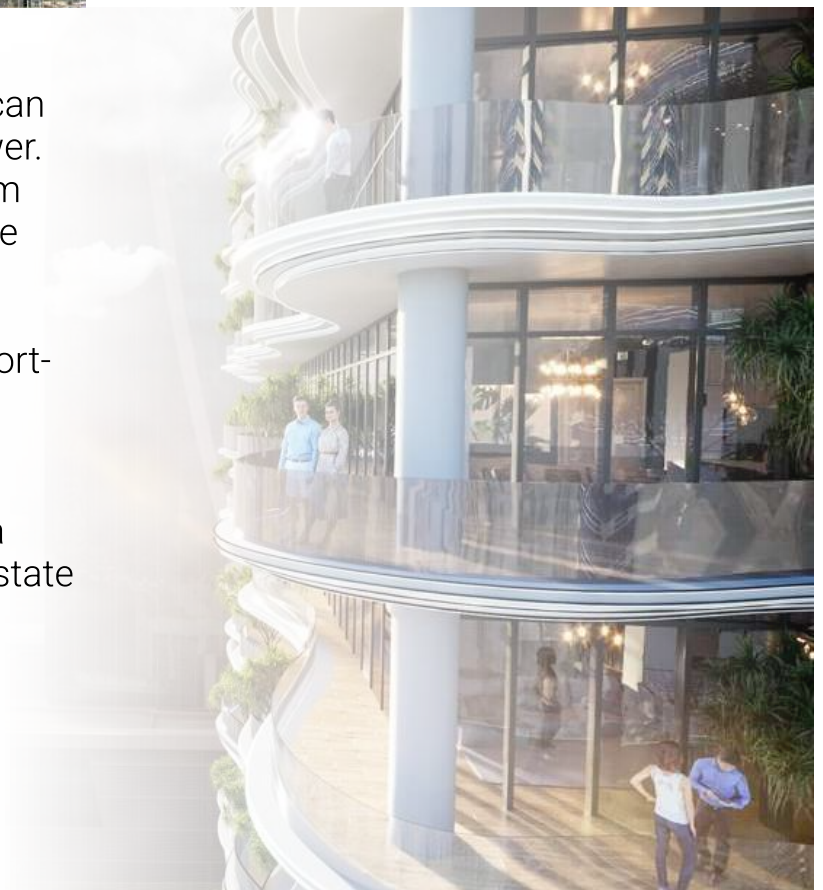
The Chic Tower should be finished in the second quarter of 2026. This tower along the scenic canal coast is anticipated to rank among Dubai's most desirable places to reside once it is completed.

Residents of all ages who care about their health and looks will value the distinctive wellness amenities and services within the residential community.

This complex is a great place for families with kids because it is close to many medical and educational institutions. The housing's position in the city's main business sector and closeness to public transportation stops will be a significant benefit for entrepreneurs and professionals who are currently employed.

Investors seeking passive rental income can consider purchasing property at Chic Tower. Propertyfinder estimates that a 1-bedroom apartment in Business Bay has an average ROI of close to 7%.

You can make even more money from short-term rentals from tourists because to the complex's placement in the center of the emirate and adjacent to well-known attractions. The developer now provides a practical monthly payment plan for real estate in Chic Tower.





Aleksandr Kovalev
Managing partner

+ 971 54 280 08 88



mail@space8.ae



+ 971 54 280 08 88