

+ 971 54 280 08 88

mail@space8.ae



Real estate in Dubai  
is a smart investment



# SAFA ONE

de GRISOGONO  
GENEVE

T h e S k y l o f t s C o l l e c t i o n



## The nature of luxury

Where the line between the opulence of nature and the elegance of home is blurred, and life is lived amid the emerald brilliance of shade-casting trees, tropical plants and the world's rarest jewels. This is the nature of luxury. This is Safa One.

S a f a O n e



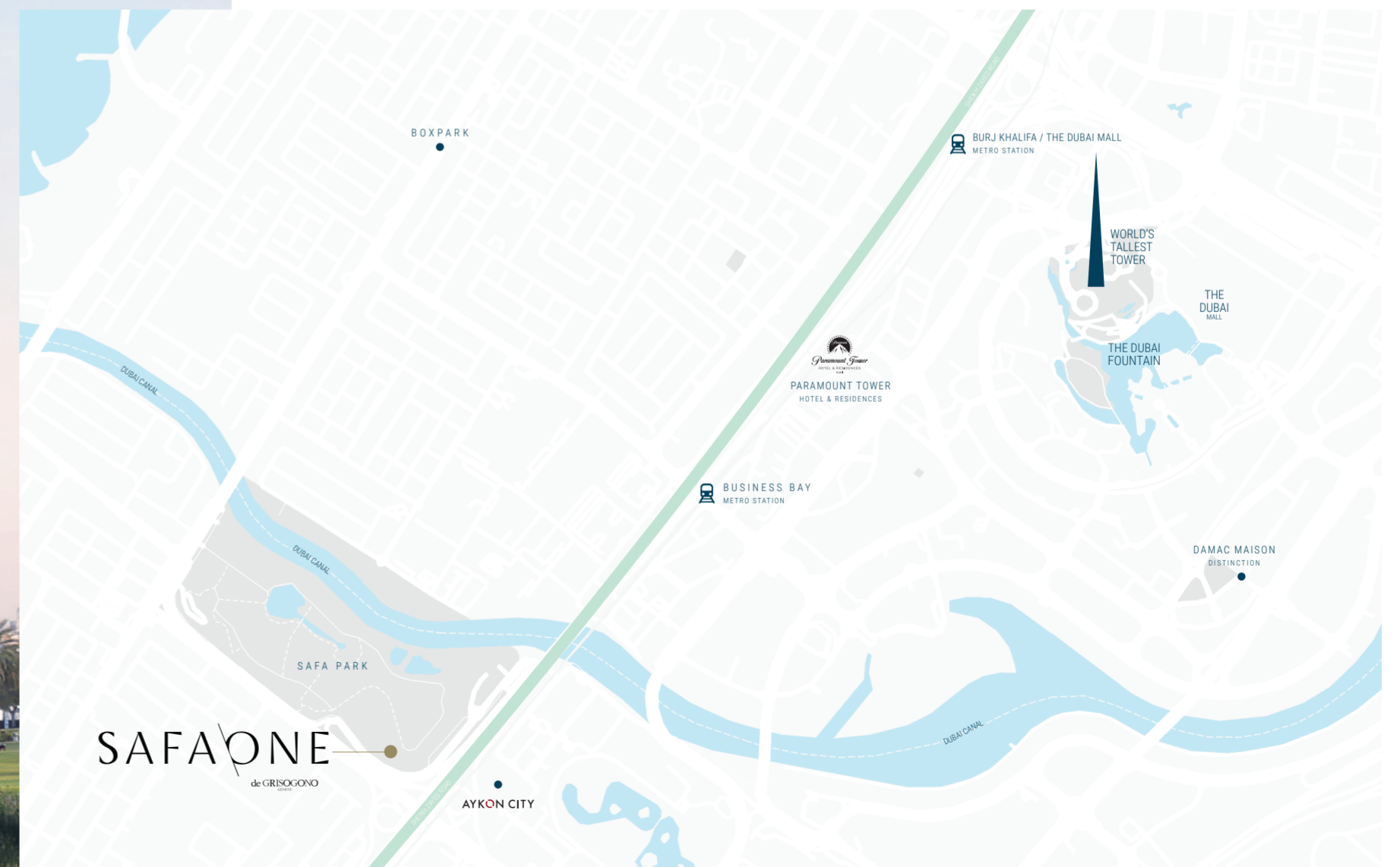
T h e S k y l o f t s C o l l e c t i o n

T  
h  
e  
S  
k  
y  
l  
o  
f  
t  
s  
C  
o  
l  
l  
e  
c  
t  
i  
o  
n



## Luxury is a location like no other

Rising along Sheikh Zayed Road, Safa One lets you take in sweeping views of Safa Park, World Islands and Bulgari Island from one side, and breathtaking vistas towards Burj Al Arab, Palm Jumeirah and Atlantis on the other.





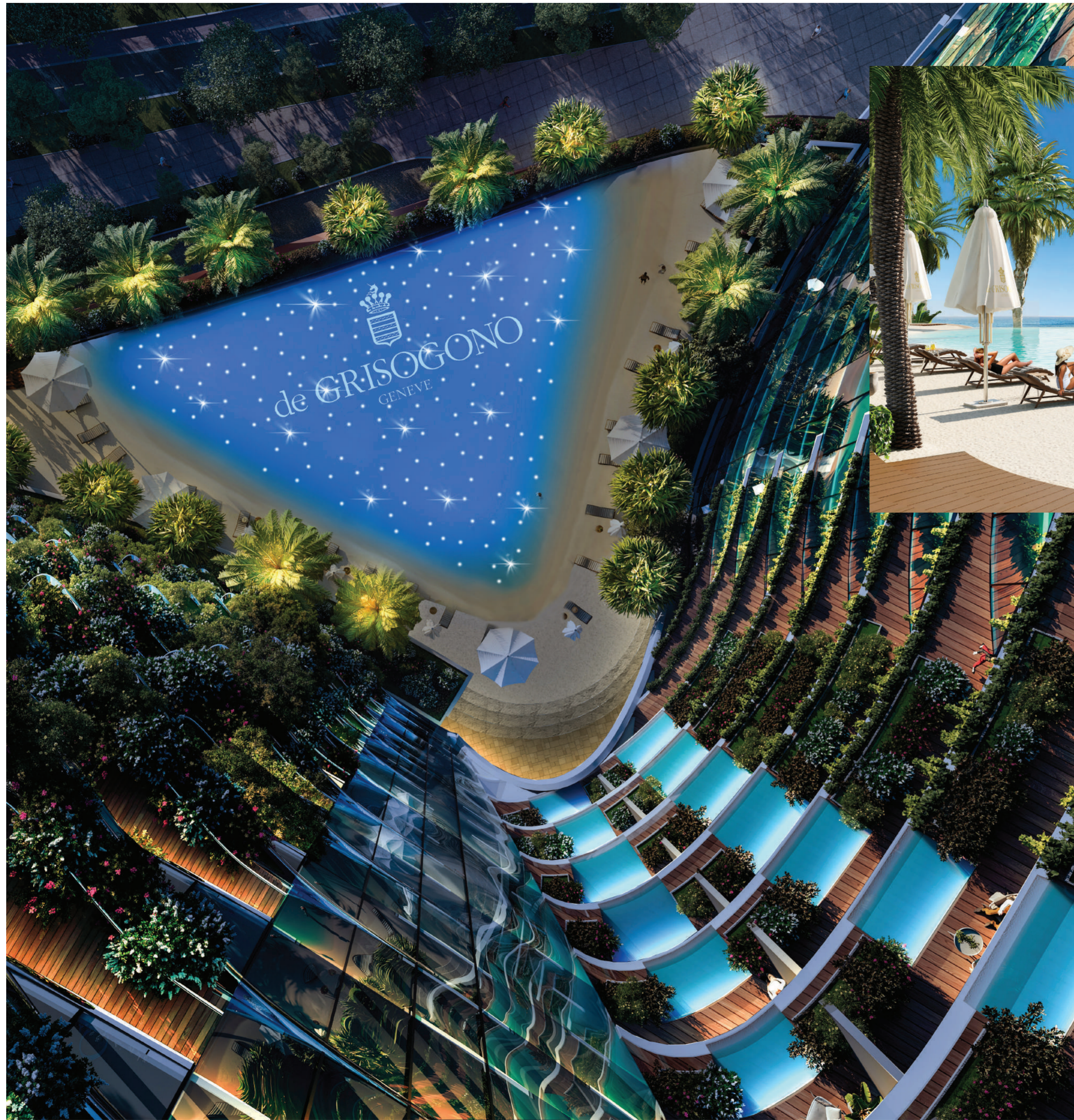
S a f a O n e



## Luxury is nature unbound

Stroll between the podium's exotic trees and flowers before casting your gaze towards Safa One's two towers, where enchanted gardens ascend the building like a necklace of jade, strung from the sky.

T h e S k y l o f t s C o l l e c t i o n



## Luxury brings the beach to your door

Safa One offers you two unique beach pools, complete with golden sands. Ease your way into glorious temperature-controlled waters and wade to the edge of infinity. The horizons of our pools come to an end, only for your view of the sea to begin.

A vibrant, high-angle photograph of a rooftop garden. The scene is dominated by lush greenery, including tall palm trees and various tropical plants. A large, curved waterfall cascades down a central feature, creating a misty atmosphere. Several colorful parrots are seen in flight throughout the space. In the foreground, a stone-paved path leads towards a small, circular pool of water. A person is visible near the pool, and another person is standing further back on the path. The entire garden is enclosed within a large, curved glass and metal structure, suggesting an indoor or semi-enclosed environment. The lighting is bright and natural, highlighting the textures of the plants and the water.

# Luxury is the highest tropical island on earth

Marvel at an unprecedented rooftop ecosystem 32 metres high and graced by manicured landscapes, birds on the wing and premium F&B. Feel the gush of tropical rain, thanks to a state-of-the-art climate-control system.

T h e S k y l o f t s C o l l e c t i o n







T h e S k y l o f t s C o l l e c t i o n

S a f a O n e

T h e S k y l o f t s C o l l e c t i o n





## Luxury is yours to own

Whether it's the two, three or four-bedroom duplex apartments, Safa One sets a new standard that glitters as brightly as a 24-carat gem. Home is where a poetic connection of space, nature and light sweeps across every square inch.



GENERAL FLOOR & KITCHEN:  
HIGH END VOLAKAS MARBLE OR  
EQUIVALENT



JOINERY: FLUTED CLEAR GLASS  
PANELS WITH METAL TRIM  
HIGHLIGHTS



RIPPLE-EFFECT METAL PANEL |  
COLUMNS



JOINERY: CUPBOARD IN WHITE  
GLOSS TIMBER VENEER WITH  
METAL TRIM HIGHLIGHTS



CLEAR MIRROR | CEILING



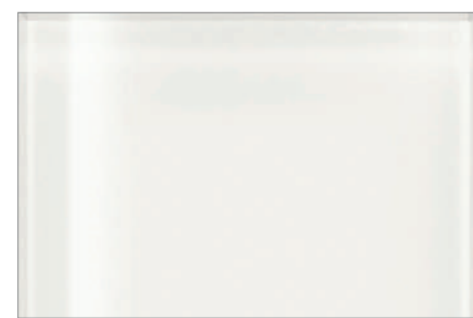
HAIRLINE GOLD STAINLESS STEEL |  
METAL TRIM HIGHLIGHTS



HAIRLINE GOLD STAINLESS  
STEEL METAL TRIMS



GENERAL FLOOR: HIGH END  
VOLAKAS MARBLE OR EQUIVALENT



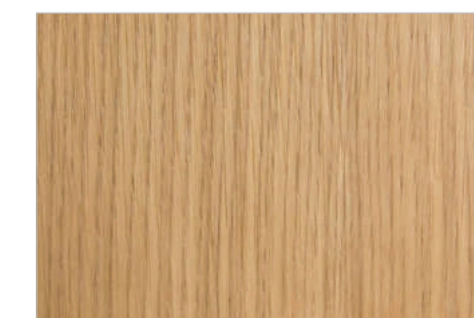
BEDROOM FEATURE WALLS:  
WHITE GLOSSY LACQUER PANEL



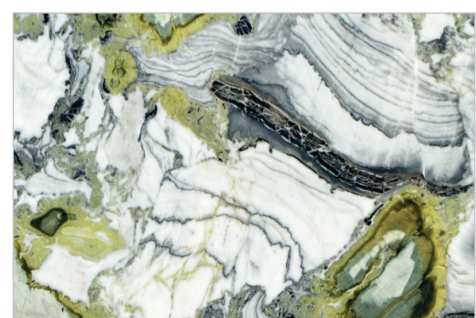
GENERAL FLOOR: HIGH END  
VOLAKAS MARBLE OR EQUIVALENT



HAIRLINE GOLD STAINLESS STEEL |  
METAL SCREEN



NATURAL OAK VENEER | LIVING  
MILLWORK



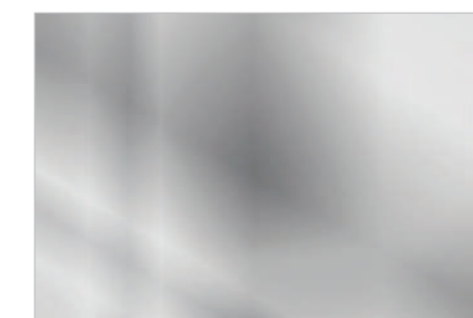
TOP OF VANITY @ WALK-IN CLOSET  
| ICE JADE GREEN MARBLE OR  
EQUIVALENT



GENERAL FLOOR: HIGH END  
VOLAKAS MARBLE OR EQUIVALENT



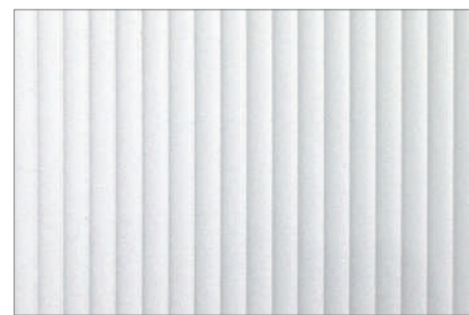
HAIRLINE GOLD STAINLESS  
STEEL METAL TRIMS



WARDROBES: CLEAR MIRROR



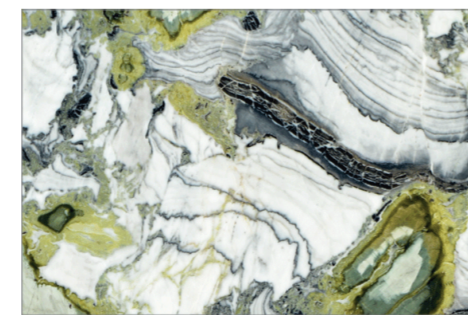
WHITE MOCK CROC LEATHER  
| ACCENT PANELS @ WALK-IN  
CLOSET



BATHROOM DOORS & PARTITION:  
FLUTED GLASS LEAVES



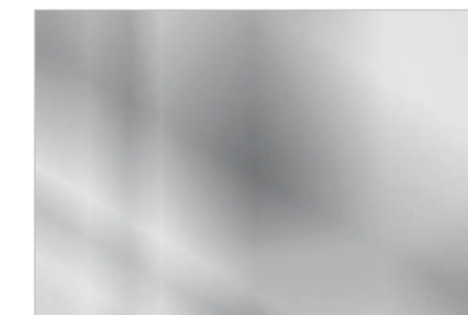
GENERAL FLOOR: HIGH END  
VOLAKAS MARBLE OR EQUIVALENT



VANITY: ICE JADE GREEN MARBLE  
OR EQUIVALENT



HAIRLINE GOLD STAINLESS STEEL  
METAL TRIMS



FEATURE WALL:  
CLEAR MIRROR



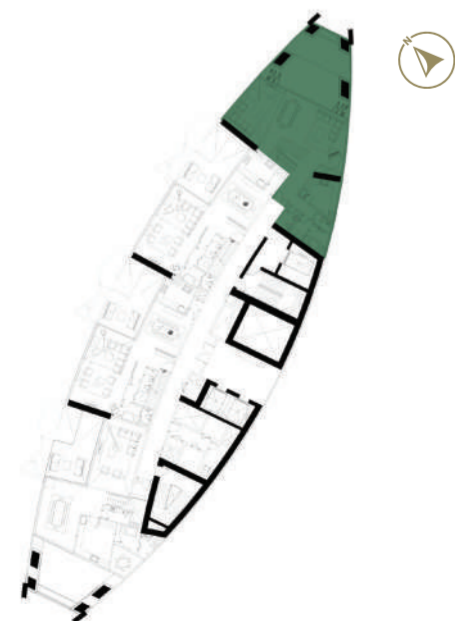
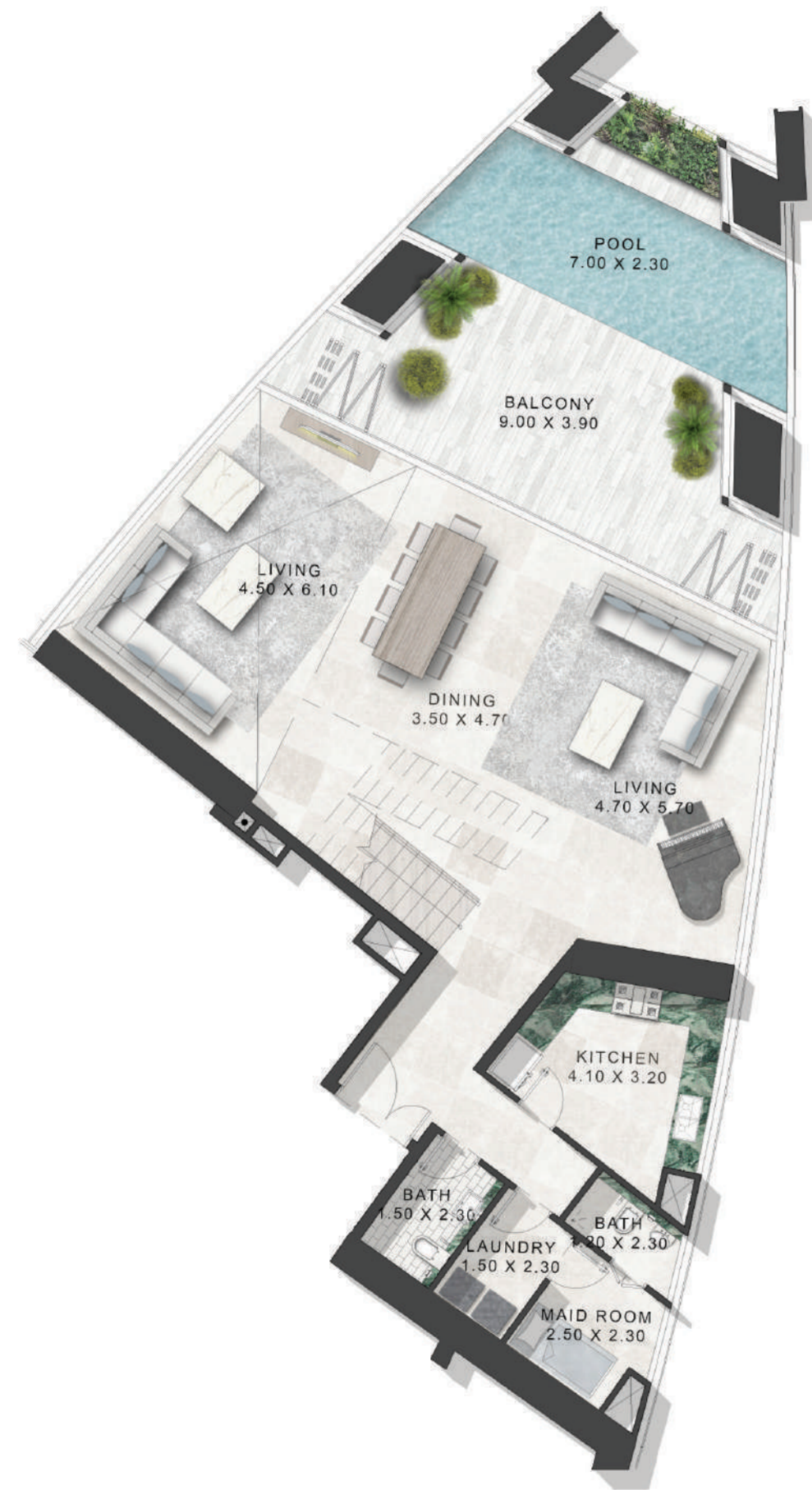
SAFAONE

de GRISOGONO  
GENEVE

Floor Plans

# 2 Bedroom Duplex

TOWER-A | TYPE-A | LOWER FLOOR  
LEVELS 40, 42, 44- 46



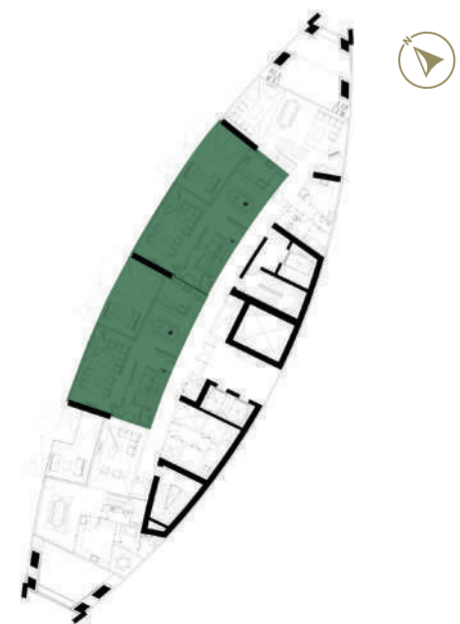
# 2 Bedroom Duplex

TOWER-A | TYPE-A | UPPER FLOOR  
LEVELS 41, 43, 45- 47



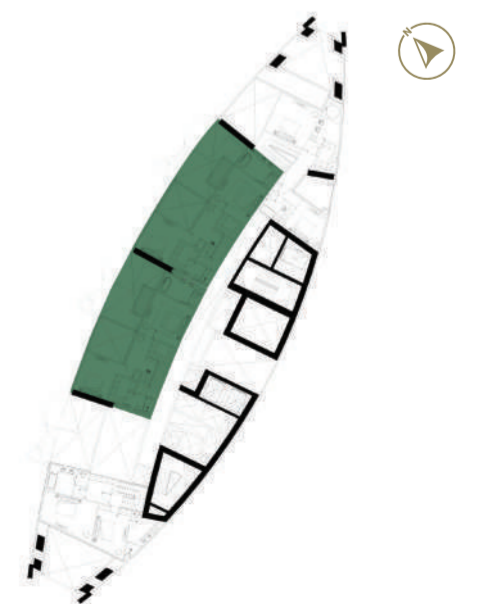
# 2 Bedroom Duplex

TOWER-A | TYPE-B | LOWER FLOOR  
LEVELS 40, 42, 44- 46



# 2 Bedroom Duplex

TOWER-A | TYPE-B | UPPER FLOOR  
LEVELS 41, 43, 45- 47



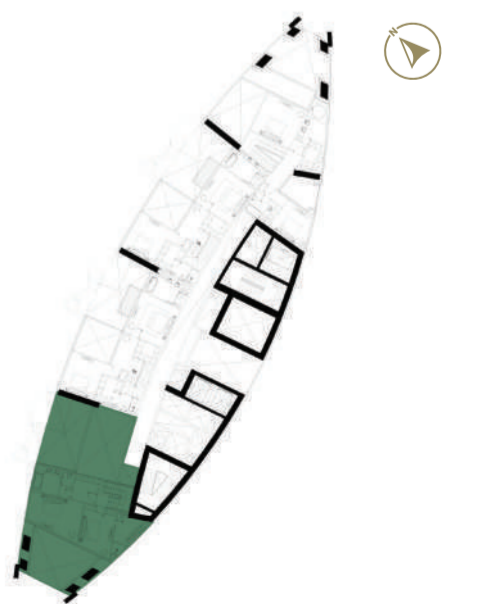
# 2 Bedroom Duplex

TOWER-A | TYPE-C | LOWER FLOOR  
LEVELS 40, 44



# 2 Bedroom Duplex

TOWER-A | TYPE-C | UPPER FLOOR  
LEVELS 41, 45



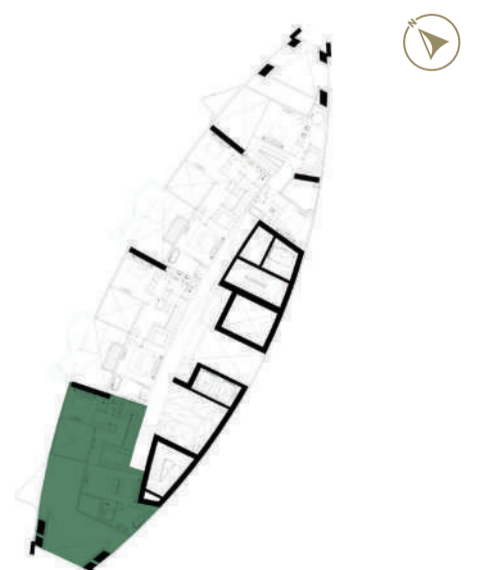
# 2 Bedroom Duplex

TOWER-A | TYPE-D | LOWER FLOOR  
LEVELS 42, 46



# 2 Bedroom Duplex

TOWER-A | TYPE-D | UPPER FLOOR  
LEVELS 43, 47



# 3 Bedroom Duplex

TOWER-A | TYPE-A | LOWER FLOOR  
LEVELS 48, 50, 52



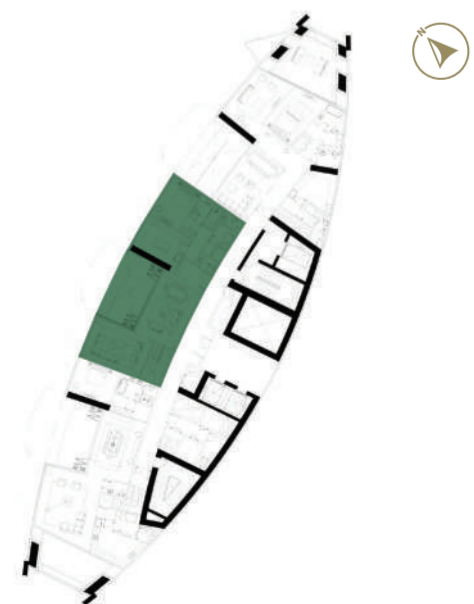
# 3 Bedroom Duplex

TOWER-A | TYPE-A | UPPER FLOOR  
LEVELS 49, 51, 53



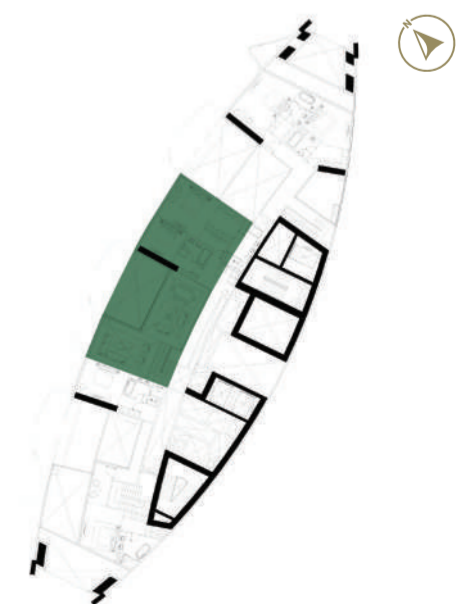
# 3 Bedroom Duplex

TOWER-A | TYPE-B | LOWER FLOOR  
LEVELS 48, 50, 52



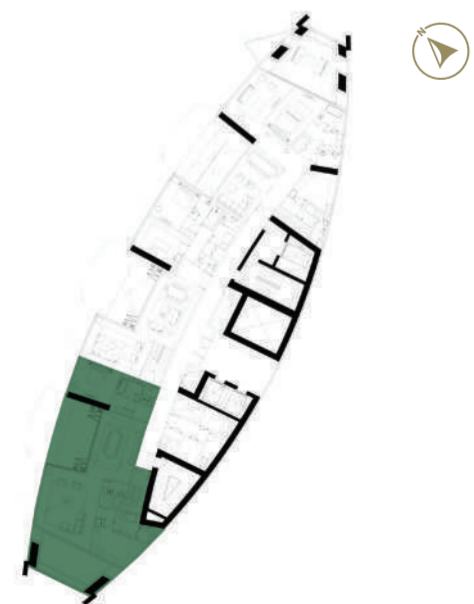
# 3 Bedroom Duplex

TOWER-A | TYPE-B | UPPER FLOOR  
LEVELS 49, 51, 53



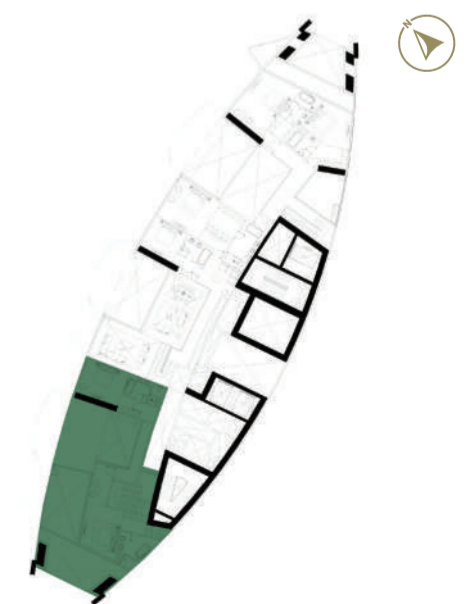
# 3 Bedroom Duplex

TOWER-A | TYPE-C | LOWER FLOOR  
LEVELS 48, 50, 52



# 3 Bedroom Duplex

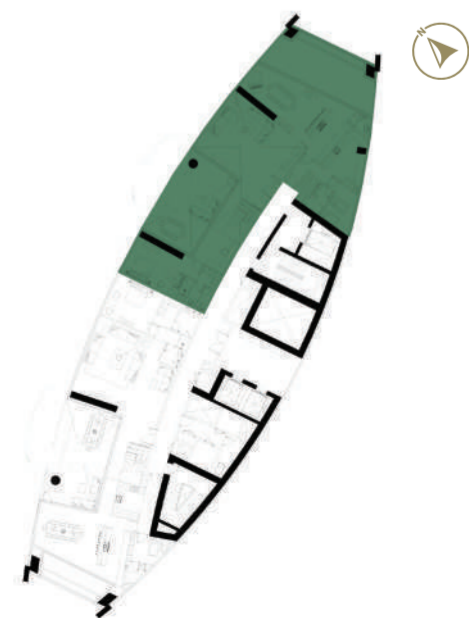
TOWER-A | TYPE-C | UPPER FLOOR  
LEVELS 49, 51, 53





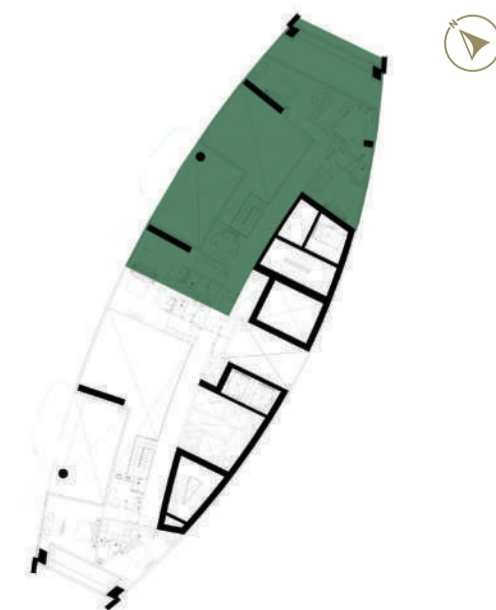
# 4 Bedroom Duplex

TOWER-A | TYPE-A | LOWER FLOOR  
LEVELS 54, 56



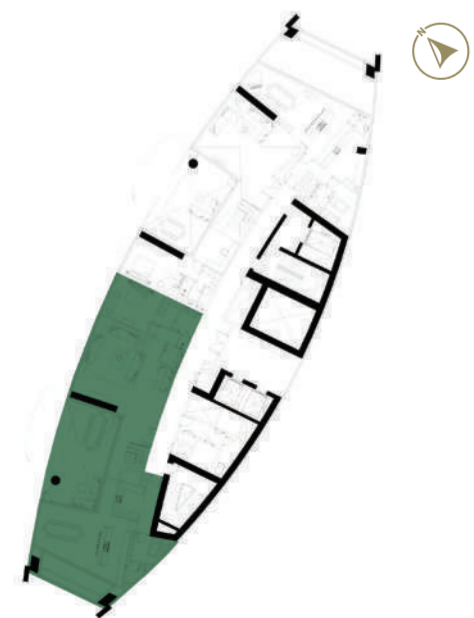
# 4 Bedroom Duplex

TOWER-A | TYPE-A | UPPER FLOOR  
LEVELS 55, 57



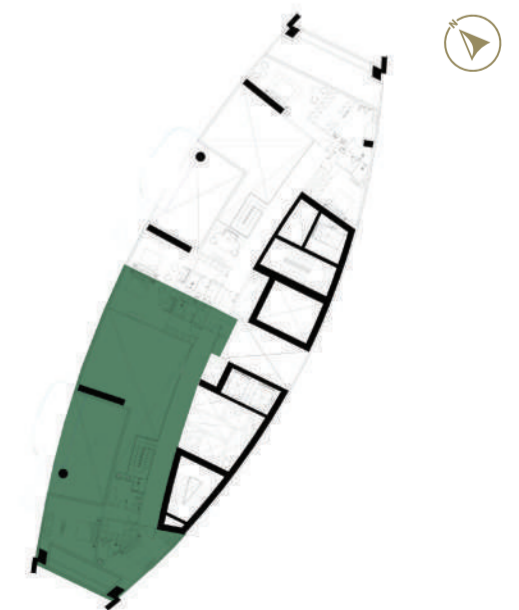
# 4 Bedroom Duplex

TOWER-A | TYPE-B | LOWER FLOOR  
LEVELS 54, 56



# 4 Bedroom Duplex

TOWER-A | TYPE-B | UPPER FLOOR  
LEVELS 55, 57



# The Penthouse

TOWER-A | LOWER FLOOR  
LEVELS 58, 60



# The Penthouse

TOWER-A | UPPER FLOOR  
LEVELS 59, 61





Aleksandr Kovalev  
Managing partner

+ 971 54 280 08 88



mail@space8.ae



+ 971 54 280 08 88